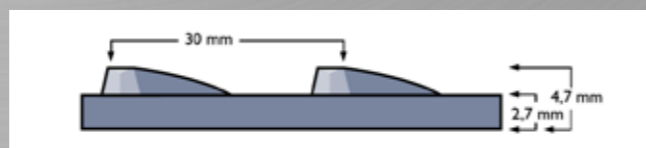
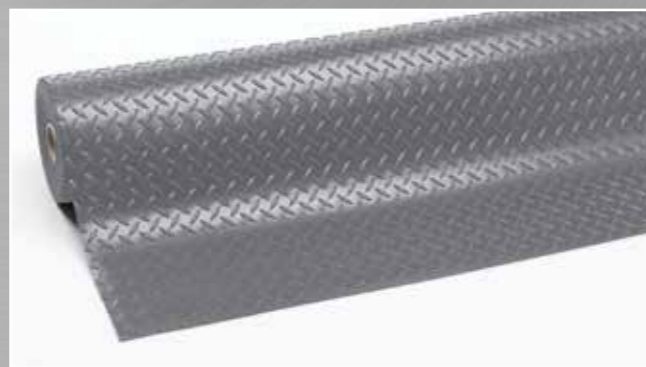


# 737 Diamond Plate Runner™ 4,7 mm



- Durable industrial vinyl flooring with rugged deck plate pattern for non-directional anti-slip.
- Matting with excellent wear and tear resistance. Used as flooring, shelf liners and in all kinds of industrial applications in workshops, near machines and any place where objects may tend to slide on workbenches, carts, cars or lorry booths.
- Available with yellow borders on demand.
- Fire classification Bfl-S1 tested according to DIN EN 13501.
- Free of toxic DOP and DMF.



# 737 Diamond Plate Runner™ 4,7 mm

PRODUCT SPECIFICATIONS			
Designation	Non-directional matting		
Type	Flooring / runner		
Description	Profile of raised diamonds surface Rugged deck plate pattern for non-directional anti-slip		
Material	PVC		
Process	Calendering		
Category	Non-directional pattern		
Recommended use	Industrial and general applications. Buildings, stations, airports, buses, ships etc.		
Colours	Black, Grey, Black/yellow		
Weight	90.7 kg per roll : 91 cm x 22.8 m 121.1 kg per roll : 122 cm x 22.8 m		
Thickness	4.7 mm		
Standard sizes	91 cm x 22.8 m 122 cm x 22.8 m		
Custom sizes	Per linear meter		
Special remarks			
PRODUCT TESTING			
	Tests	Norms	Results
Compression deflection		U.S.	
	1.4 kg/cm <sup>2</sup>		
	2.8 kg/cm <sup>2</sup>		
Foam battery		ASTM D3574	
Abrasion resistance		ASTM D3884-01	
	500 Cycles		
	5000 Cycles		0.08% weight loss
Static coefficient of friction		ASTM C1028-96	0.65
Elongation		ASTM D412	150%
Breaking load		ASTM D412	
Graves tear strength		ASTM D 1004	35 N/mm <sup>2</sup>
Hardness		ASTM D2240-02	88 Shore A
Anti-slip		DIN 51130 and BG-RULE BGR181	R9
FIRE TESTING			
	Critical radiant flux	ASTM E-648	0.51 watts/cm <sup>2</sup>
	Fire retardancy	DIN4102	
		EN 13501-1	Bfl-S1
	Flammability test	ASTM D2859	
ESD		ANSI ESD S7.1 50% Humidity	
Sustainability		<ul style="list-style-type: none"> <li>• Recyclable material</li> <li>• 100% recycled PVC</li> <li>• Reach Compliant (Registration, Evaluation, Authorization and Restriction of Chemicals)</li> </ul>	