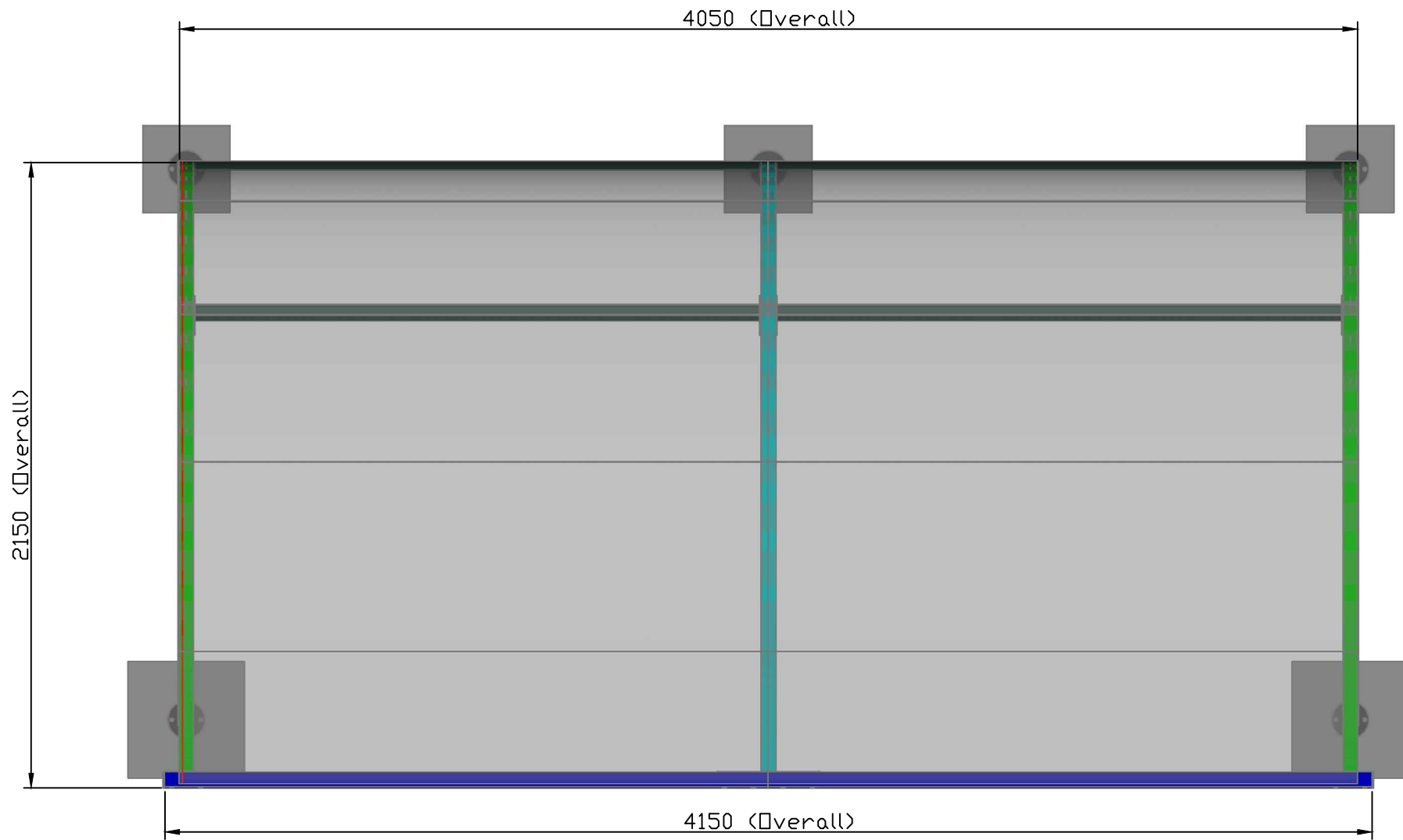


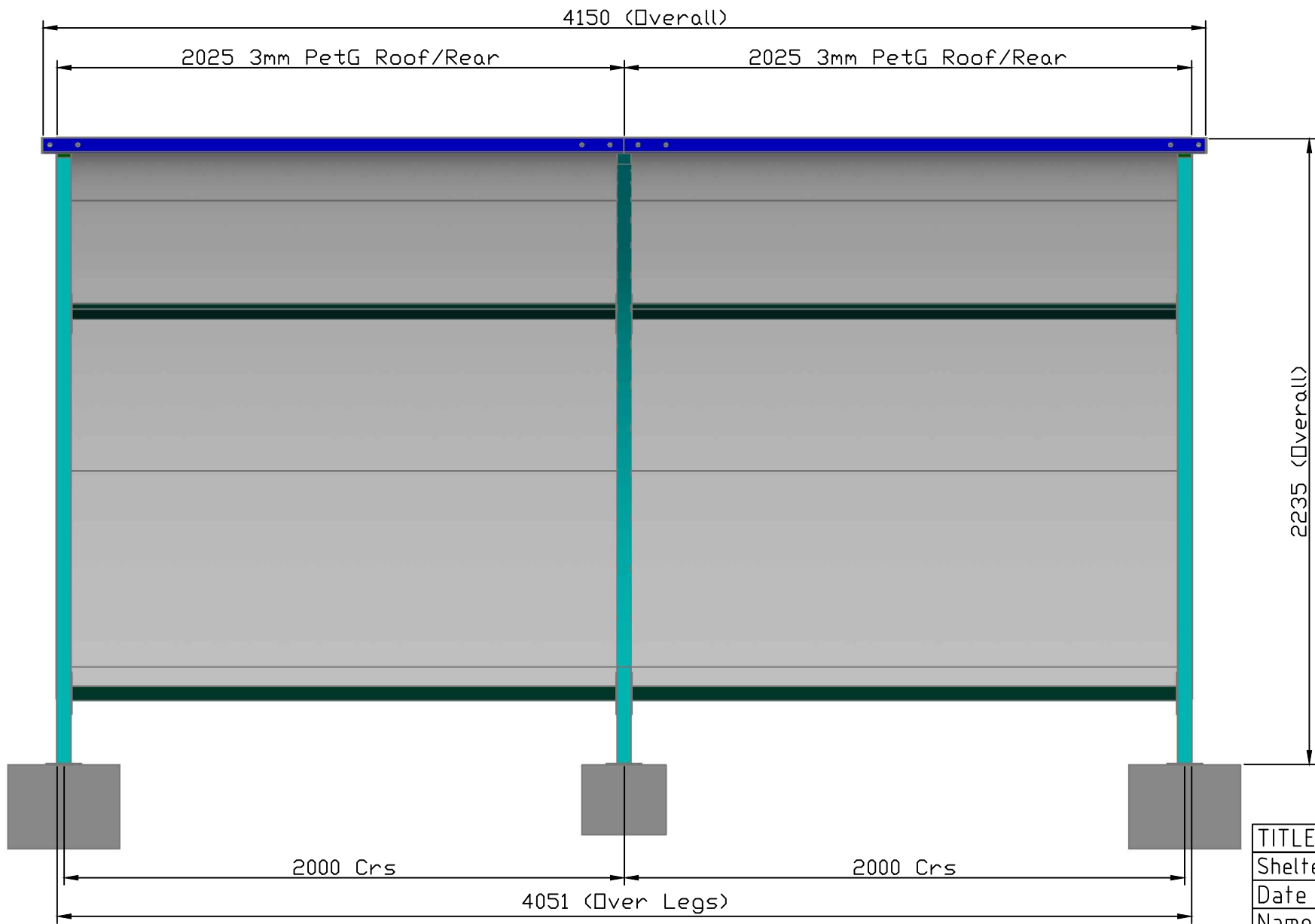
Rev E   Updated.	
Checked	Date 19/12/17
Approved	Date 19/12/17
TITLE	Dudley 4M x 2.15M Shelter. Code SCDUD4020
Date	07/04/15 <small>LAST REV</small>
Name	RTB
Job Code	Standard
Drg No.	3D View
800	Scale 1:25
<b>pittman</b> <sup>®</sup>	Rev E



TITLE	Dudley 4M x 2.15M Shelter. Code SCDUD4020	
Date	07/04/15	LAST REV
Name	RTB	
Job Code	Standard	
Drg No.	Plan View	
801	Scale 1:20	

Rev E	Updated.		
Checked	.	Date	21/12/17
Approved	.	Date	21/12/17

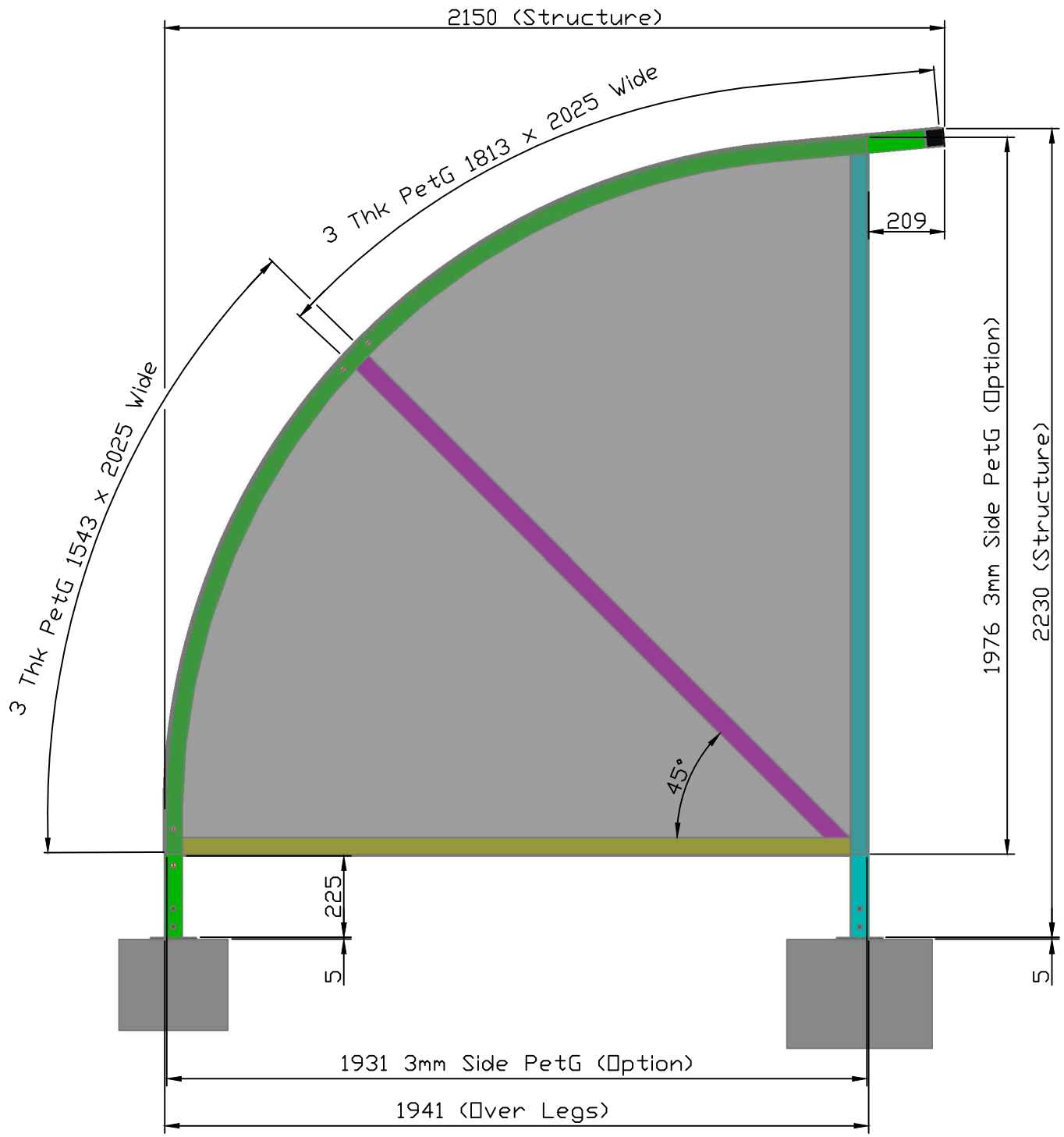
	Rev
	E




TITLE	Dudley 4M x 2.15M Shelter. Code SCDUD4020	
Date	07/04/15	LAST REV
Name	RTB	
Job Code	Standard	
Drq No.	Front View	
802	Scale 1:20	

Rev E	Updated To Suit Shop Floor Info.		
Checked	.	Date	21/12/17
Approved	.	Date	21/12/17

	Rev
	E



Rev E   Updated.	
Checked	Date 21/12/17
Approved	Date 21/12/17
TITLE   Dudley 4M x 2.15M Shelter. Code SCDUD4020	
Date	07/04/15 <small>LAST REV</small>
Name	RTB
Job Code	Standard
Drq No.	Side View
803	Scale 1:16
	
Rev	E

4300 (Full Base Option)

2000 Crs

2000 Crs

2241 (Full Base Option)

1891 Crs

50

Plan View

4000 Crs

50

Front

400

400

Key


— — Full Base Option

■ Area Of Individual Pads

**NOTE**  
The Shelter Must Not Be Sited Directly Onto Paving Slabs, Block Paving Stones, Tarmac, Grass Or Similar. The installation team Will Not Install On The Above Surfaces. Site MUST Be Clear And Level.

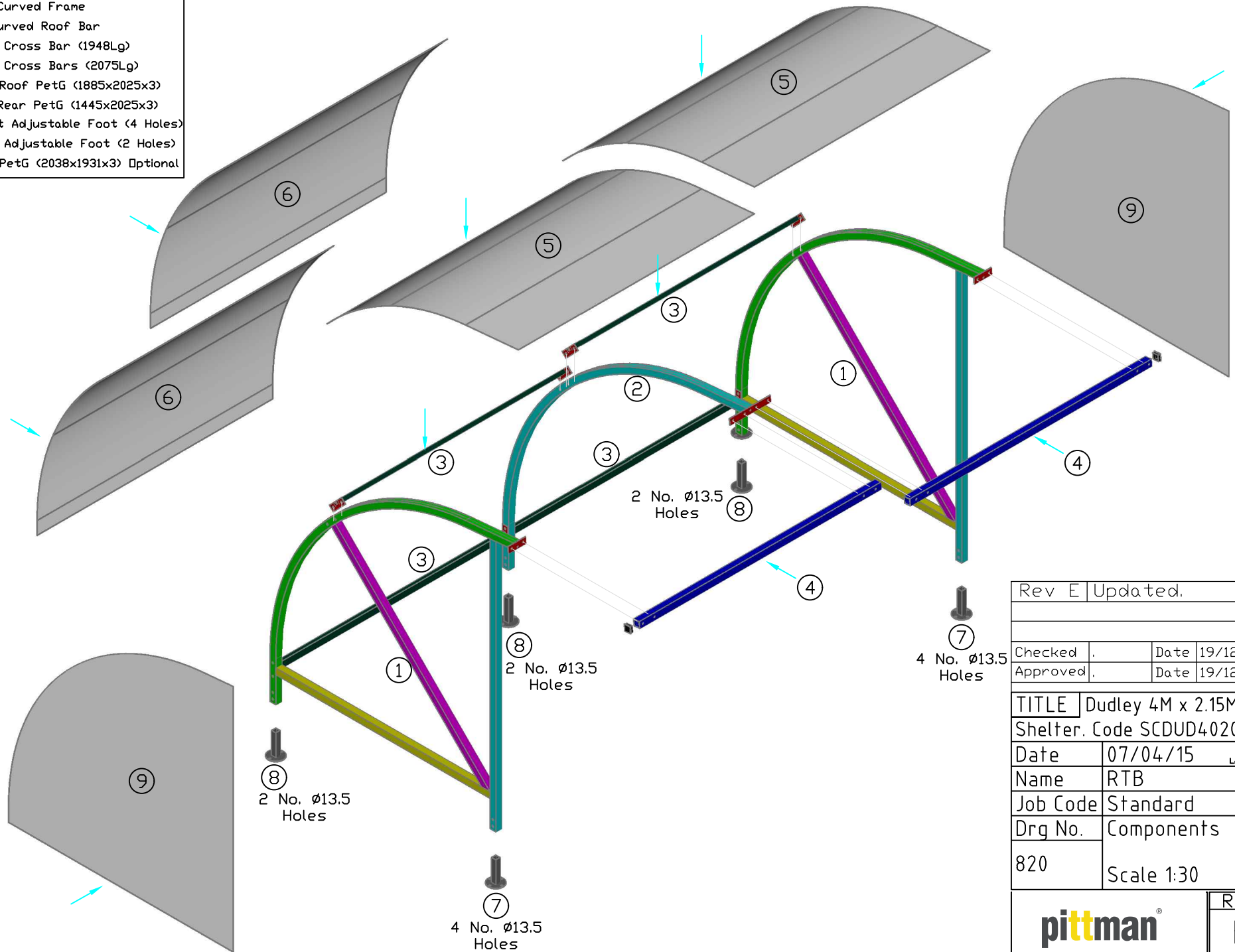
Shelter Must Be Set On Either A Full Concrete Base With A Minimum Depth Of 150mm.  
Or Shelter Legs Must Be Set Central On Concrete Pads 300x300x250 & 400x400x300 Deep As Shown.

'IMPORTANT' Concrete Must Be Cast At Least 7 Days Before Shelter Installation Commences.

Rev A   Updated.	
Checked	Date 21/12/17
Approved	Date 21/12/17
TITLE   Dudley 4M x 2.15M Shelter. Code SCDUD4020	
Date	07/04/15 <small>LAST REV</small>
Name	RTB
Job Code	Standard
Drq No.	Concrete Pad Plan. Scale 1:25
810	
	
Rev A	

**Components List**

- ① 2 No. End Curved Frame
- ② 1 No. Mid Curved Roof Bar
- ③ 4 No. Rear Cross Bar (1948Lg)
- ④ 2 No. Roof Cross Bars (2075Lg)
- ⑤ 2 No. High Roof PetG (1885x2025x3)
- ⑥ 2 No. Low Rear PetG (1445x2025x3)
- ⑦ 2 No. Front Adjustable Foot (4 Holes)
- ⑧ 3 No. Rear Adjustable Foot (2 Holes)
- ⑨ 2 No. Side PetG (2038x1931x3) Optional



Rev E   Updated.	
Checked	Date 19/12/17
Approved	Date 19/12/17
TITLE   Dudley 4M x 2.15M Shelter. Code SCDUD4020	
Date	07/04/15 <small>LAST REV</small>
Name	RTB
Job Code	Standard
Drq No.	Components
820	Scale 1:30
<b>pittman</b>	
Rev E	