

TECHNICAL SPECIFICATIONS

Capacity: 60 litres.

Dimensions: Ø 460 x H 640 mm.

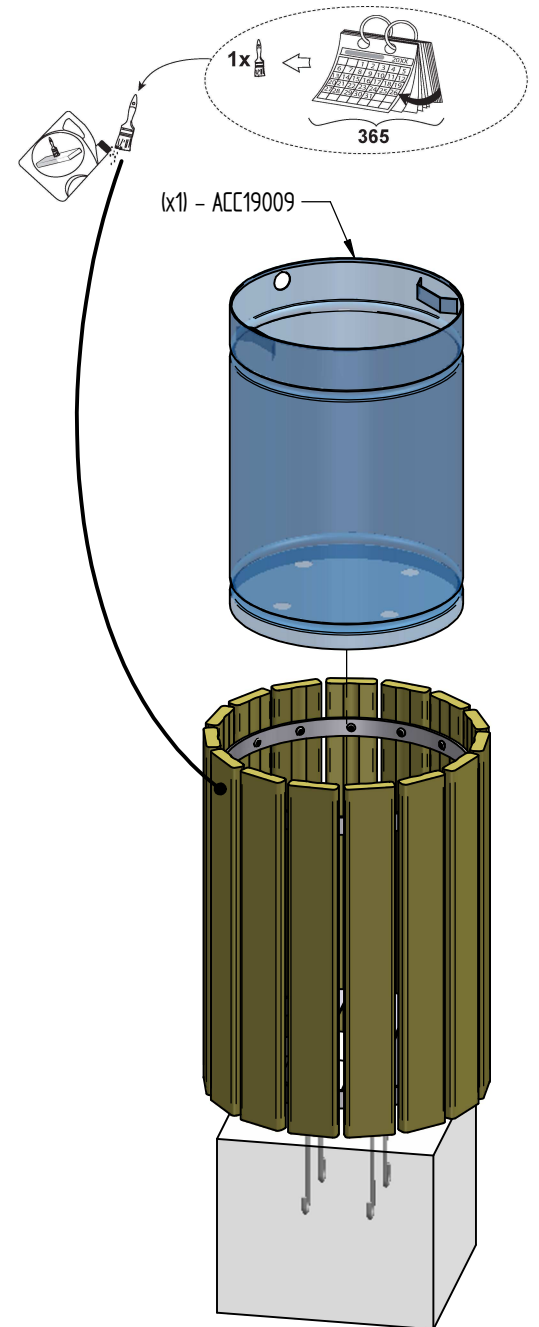
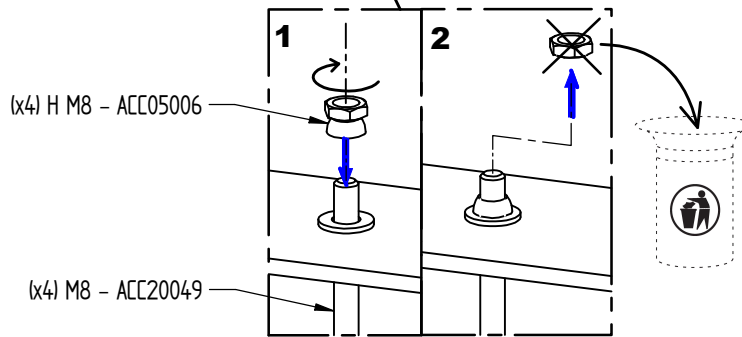
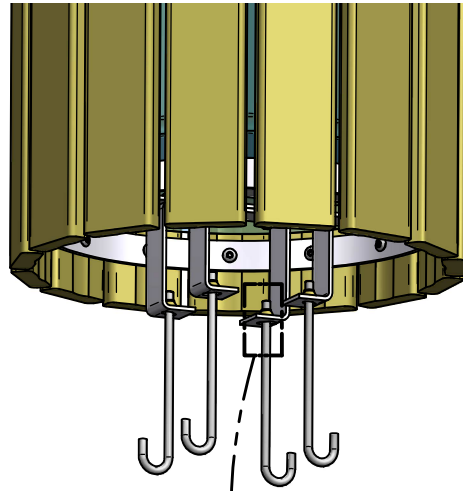
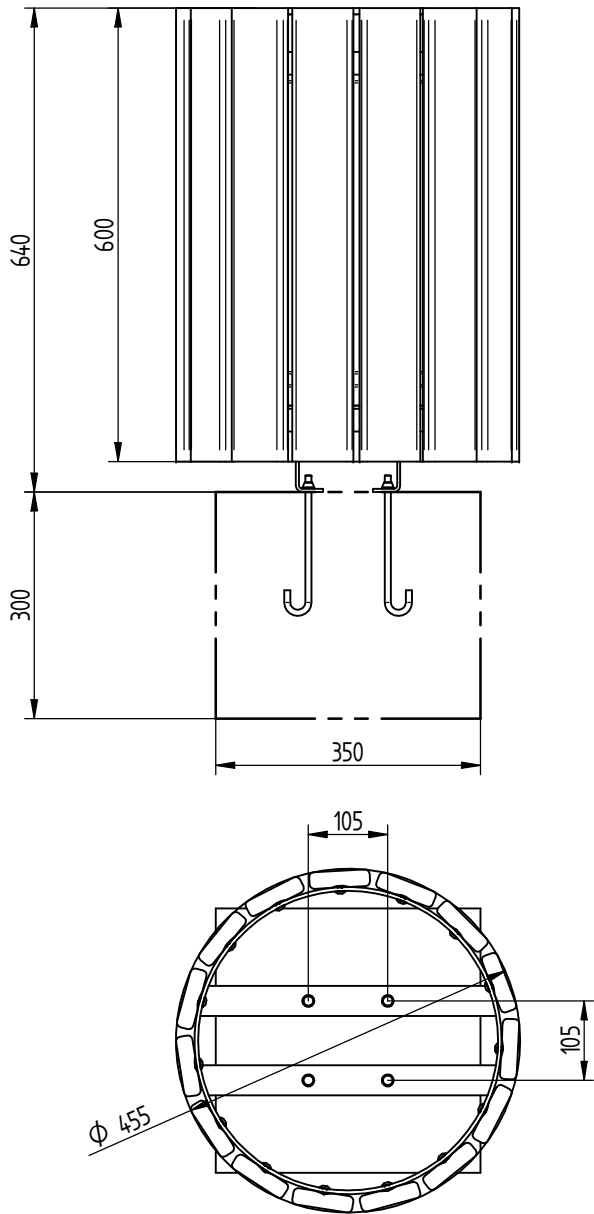
Litter bin in exotic hard wood, depth 22 mm.

Wood finish: water based colour stain preserver in light oak or mahogany.

Internal bucket supplied.

Anchor bolts supplied.





pittman[®]