



Product Code: 755711

# E-BIKE SHEFFIELD CYCLE STAND

**GALVANISED - SUB-SURFACE**

Durable Bike Stand With Built-In Charging

**pittman**<sup>®</sup>

## OVERVIEW

The E-Bike Sheffield Cycle Stand offers a sturdy and practical solution for secure bike storage while also providing a convenient charging option. Constructed from robust steel, this stand is built to withstand the elements and resist wear and tear, ensuring long-lasting durability.

The stand includes integrated charging capabilities, allowing cyclists to power up their e-bikes with ease while securely parked. The sub-surface installation ensures the stand remains stable and secure, making it a reliable choice for public spaces. The wide design and strong tubing provides ample support for bikes of various sizes.

You can special order the stand with a powder-coated finish to add a touch of style while enhancing its corrosion resistance. The E-Bike Sheffield Cycle Stand is an ideal blend of functionality, security, and convenience.

## PRODUCT FEATURES

- Integrated charging points are convenient and easy to use.
- Built from durable materials, the stands are heavy-duty and won't rust or corrode.
- Designed for secure, sub-surface installation for added stability in public areas.
- Space-efficient design supports multiple bikes without taking up excessive space.
- Optional powder coated finish in a variety of RAL colours allows you to customise your stand.

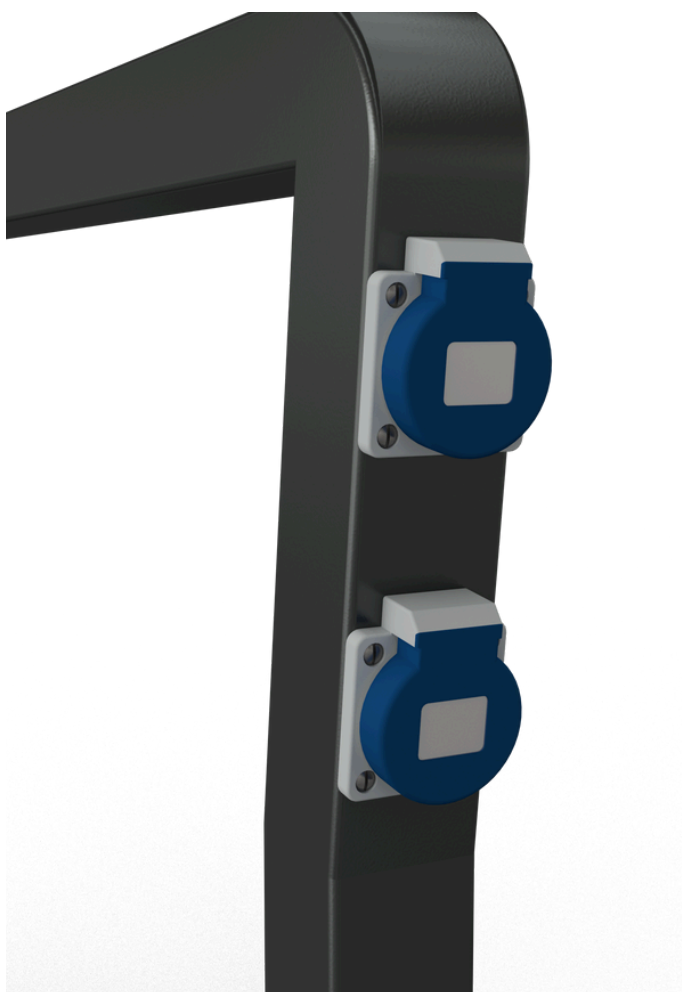
## TECHNICAL DATA

SPECIFICATION	DETAILS
Material:	Galvanised Steel
Overall Height:	1200mm
Above Ground Height:	900mm
Width:	800mm
Tube Dimensions:	60x60x2mm
Fixing:	Sub-surface
Socket Detail:	2 x UK IP54
Applications	Ideal for public spaces, office blocks, shopping centres, schools and retail parks.



### CUSTOMISABLE FINISH

Special order a powder coat finish in a variety of RAL colours to match into your brand.



## INSTRUCTIONS FOR USE

- 1. Prepare the Area:** Mark out the area where the stand will be installed and identify if the necessary wiring is available in the area. Dig out the foundation for the legs, approximately 500mm deep. If multiple stands are being installed side by side, leave a minimum of 800mm between each.
- 2. Wire the Stand:** Using a registered electrician, hook up the wiring from the stand to the mains supply.
- 3. Install the Stand:** Concrete the legs of the stand into the pre-dug holes, approximately 300mm below ground.
- 4. Ready for Use:** Once the concrete is set, the stand should be ready for immediate use with standard or e-bikes.