

**MAJOR HIGHLIGHTS**

- Meets EN12899-3 standards for certified quality
- Offers easy installation with screw-down or easy spin options
- UV resistant for enhanced durability and long-lasting color
- Features a crash-friendly design for superior impact resistance
- Made of flexible TPU with a high memory effect
- Resistant to light and heavy vehicles for reliable performance
- Quickly returns to its original form after impact to reduce maintenance needs
- Includes UV protection to prevent damage from sunlight exposure
- Equipped with 3M reflective tape for high visibility at night for added safety
- Available in a wide range of colors and sizes to meet various needs

**DESCRIPTION**

The DURAFLEX bollards feature an innovative axis fixation system, which allows them to absorb impact and return to their original position without damage, providing reliable protection for road users. With a cylindrical polyurethane body that measures 8 cm in diameter, these bollards are available in a range of colors to match any project's aesthetic. The reflective bands on the bollards can be customized to suit your specific requirements, and feature high prismatic lens reflective sheeting with a pressure-sensitive adhesive coating, offering superior reflectivity compared to ASTM Type III standards. The bollards are attached to the deck using an internal screw, and the installation system is specifically designed to maximize stability and durability.



*New Generation of*  
**FLEXIBLE BOLLARD**  
100 % Premium TPU

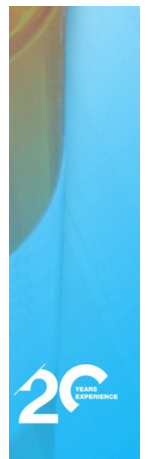
	<b>DF1000</b>	<b>DF800</b>	<b>DF450</b>
<b>Height</b>	1000 mm	800 mm	450 mm
<b>Diameter</b>	80mm	80 mm	80mm
<b>Reflective</b>	50mm	50 mm	50mm
<b>Weight</b>	1,65 Kg	1,4 Kg	1,0 Kg
<b>Material</b>	TPU	TPU	TPU
<b>Screw-Anchor</b>	65mm	65 mm	65mm
<b>Screw-Anchor Material</b>	Galvanised steel	Galvanised steel	Galvanised steel

**ONE-PIECE DESIGN**

DURAFLEX is a one-piece design, with the screw, anchor, and bollard all forming a unified whole. This innovative design improves the bollard's resistance to impact and accidents, providing enhanced durability and longevity compared to traditional bollards that rely on separate screws and a large base.

DURAFLEX withstands better the force of impacts and crashes. In addition.

Overall, the one-piece design of the bollard offers improved performance and longevity, making it an excellent choice for a wide range of applications where durability and safety are a top priority.



## INSTALLATION GUIDE

Using a suitable drill bit, create a 19 mm diameter hole that is at least 65 mm deep. This depth is necessary to accommodate the insertion of the metal anchor that comes with the bollard.

Please ensure that the hole is drilled at a 90-degree angle to the road surface and that the surface is free of any debris before proceeding with the installation.

Before inserting the metal anchor, it is important to clean the drilled hole of any debris or loose material.

Use compressed air or a clean, dry cloth to remove any dirt, dust or debris from the hole.

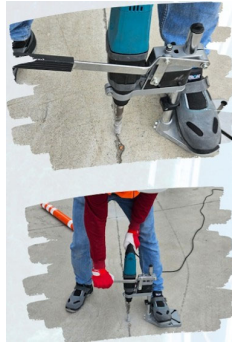
Insert a metal tool, such as a screw M12, into the bottom of the anchor and strike it firmly with a hammer to drive the anchor downward, causing the arms to expand and grip the sides of the hole tightly ensuring a secure attachment."

Insert the TPU bollard into the metal anchor using a twisting motion. To do this, firmly grasp the top of the bollard and twist it clockwise until it locks into place. You should feel the bollard seat firmly into the metal anchor.

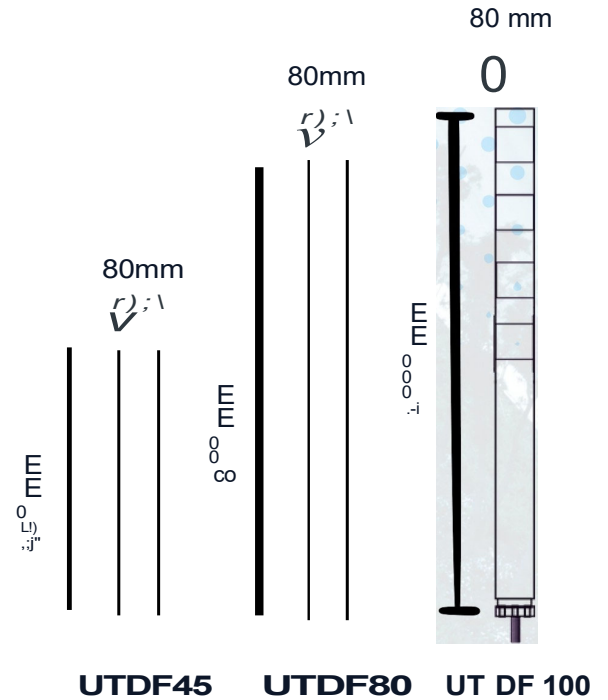
After that, the bollard may still be loose and require additional tightening to ensure maximum stability.

To do this, we recommend using a Belt Strap Wrench, which can be wrapped around the base of the bollard and tightened to provide additional torque. With the wrench in place, continue to twist the bollard in a clockwise direction until the screw reaches the end of the anchor.

And now You're all set!



## DIMENSIONS



## TOOLS YOU WILL NEED

